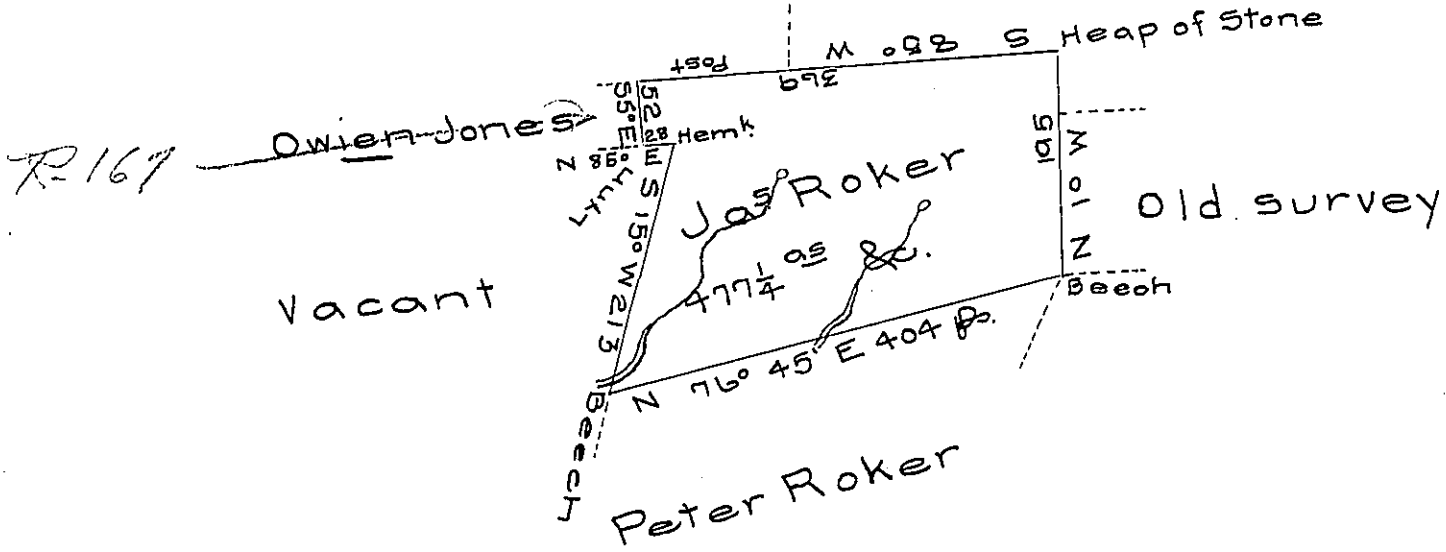


Jas Johnston



Draft of a tract of land called — situate at the foot of the Moseac Mountain on the Westerly side thereof and some springs which falls into the Easterly side of Lahawanock Creek about ten miles from the head thereof in the County of Luzerne containing four hundred & seventy seven acres & allow^e of six p cent for roads & surveyed for James Roker the 14th day of October (pbl.) 1789 in pursuance of a warrant dated the 18th day of June 1789.

by W^m Gray D.S.

Daniel Brodhead Esq. }
 Surv^r Gen!

IN TESTIMONY that the above is a copy of the original remaining on file in the Department of Internal Affairs of Pennsylvania, made conformably to an Act of Assembly approved the 16th day of February, 1833, I have hereunto set my Hand and caused the Seal of said Department to be affixed at Harrisburg, this thirteenth day of August 1906.

Isaac B. Brown
 Secretary of Internal Affairs.